

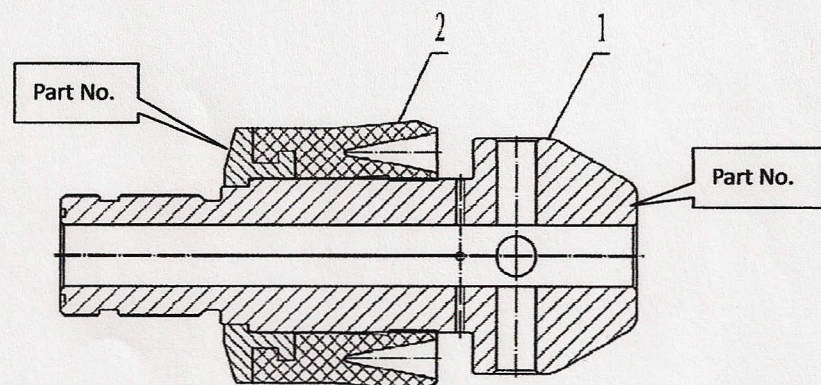
## Guideline for Cup Packer, Stabbing Guide and Seal Cap Selection, Assembly and Disassembly

### 1. Selection of the Cup Packer, Stabbing Guide and Seal Cap

Based on the specification of the casing (O.D. and Wall Thickness) and refer to Appendix A, pick the right Cup Packer, Stabbing Guide and Seal Cap for the application. The first step is to know the specification of the casing (O.D. and Wall Thickness), for example, 7" casing with wall thickness of 11.51mm will be set, then refer to Appendix A, Cup Packer 5303940220(7B) is the one to pick, and the stabbing guide 9556901158 follows, and then Seal Cap 9556902158. Pick these parts in the right order.

### 2. Assembly and Disassembly of the Cup Packer, Stabbing Guide

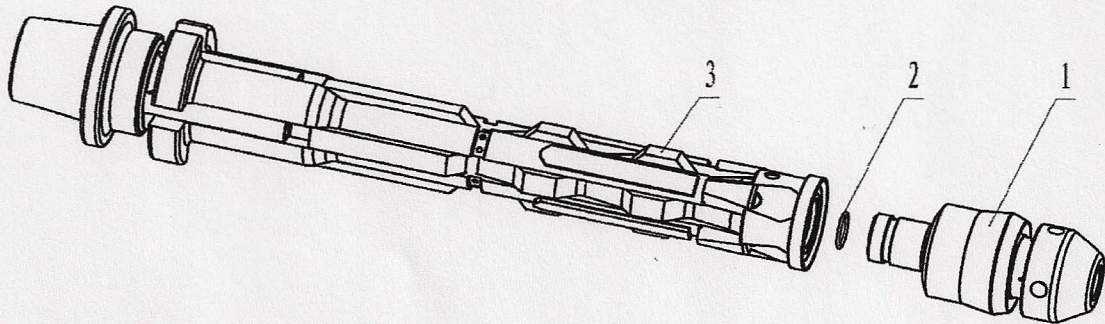
- 1) Pick the right Cup Packer, Stabbing Guide and Seal Cap for the application.
- 2) Apply a thin layer of Calcium Based Grease on the Stabbing Guide. Figure 1 shows how the Stabbing Guide and Cup Packer fit together.



1. Stabbing Guide 2. Cup Packer

Fig 1. Cup Packer and Stabbing Guide

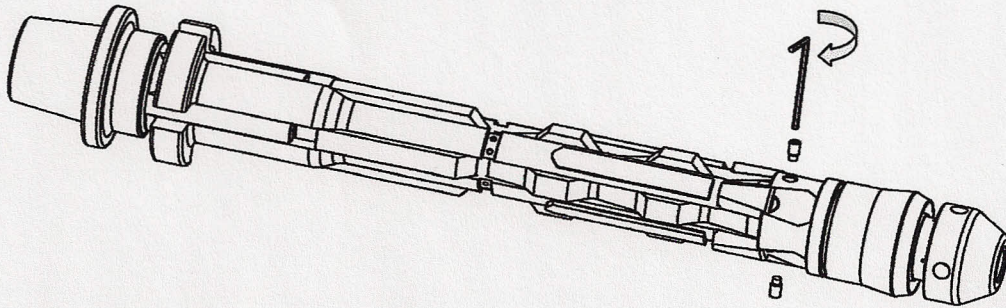
- 3) Refer to Figure 2, install the Seal Cap at the right end of the Slip Mandrel. Install the O-ring at the left end of the Stabbing Guide, have the Stabbing Guide threaded to the Slip Mandrel. The Seal Cap now abuts against the Cup Packer.



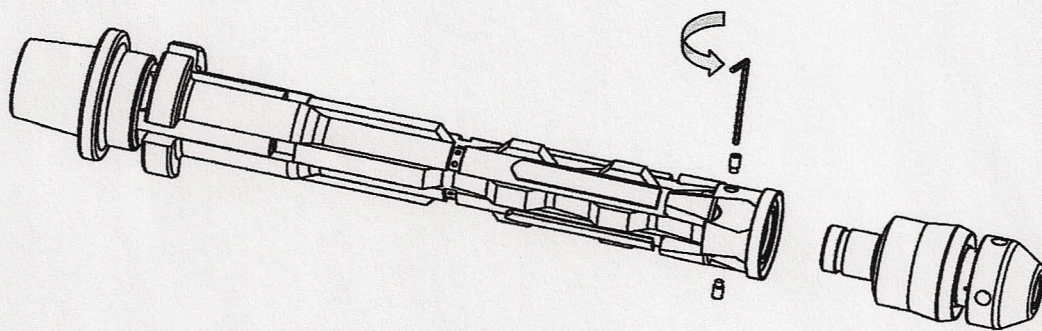
1.Cup Packer Assembly 2. O-ring 3.Slip Mandrel

Fig 2. Illustration for Assembly of the Stabbing Guide and Cup Packer

- 4) Have the Set Screws threaded to the Slip Mandrel. The dog point sets into the groove in the Stabbing Guide for anti-loosening.



- 5) For disassembly, reverse the procedures above.



## Appendix A: Slips, Cup Packer, Stabbing Guide and Seal Cap Selecting Guide

Casing Specification					Selecting CRS Components			
Size	O.D.	Wall Thick	I.D.	Drift Dia.	Slip	Cup Packer	Stabbing Guide	Seal Cap
6-5/8	168.28	7.32	153.64	150.46	9556900138	5303940220 (7B)	9556901158	9556902158
6-5/8	168.28	8.94	150.40	147.22				
6-5/8	168.28	10.59	147.10	143.92		5303940460 (7C)	9556901138	9556902138
6-5/8	168.28	12.06	144.16	140.98				
7	177.80	5.87	166.06	162.88	9556900158	5303940210 (7A)	9556901158	9556902158
7	177.80	6.91	163.98	160.80				
7	177.80	8.05	161.70	158.52				
7	177.80	9.19	159.42	156.24				
7	177.80	10.36	157.08	153.90	9556900138	5303940220 (7B)	9556901158	9556902158
7	177.80	11.51	154.78	151.60				
7	177.80	12.65	152.50	149.32				
7	177.80	13.72	150.36	147.18				
7	177.80	15.88	146.04	142.86				
7	177.80	17.45	142.90	139.72	5303940460 (7C)	9556901138	9556902138	
7-5/8	193.68	7.62	178.43	175.26	9556900158	5303940430 (75A)	9556901178	9556902178
7-5/8	193.68	8.33	177.01	173.84				
7-5/8	193.68	9.52	174.63	171.46				
7-5/8	193.68	10.92	171.83	168.66				
7-5/8	193.68	12.7	168.27	165.10				
7-5/8	193.68	14.27	165.13	161.96				
7-5/8	193.68	15.11	163.45	160.28				
7-5/8	193.68	15.88	161.91	158.74				
7-5/8	193.68	17.45	158.77	155.60	9556901158	9556902158		
7-5/8	193.68	19.05	155.58	152.40			5303940450 (75C)	

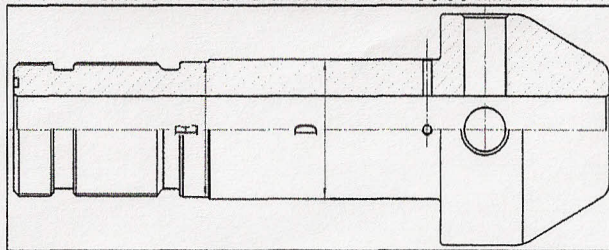
## Appendix A: Slips, Cup Packer, Stabbing Guide and Seal Cap Selecting Guide

Casing Specification					Selecting CRS Components					
Size	O.D.	Wall Thick	I.D.	Drift Dia.	Slip	Cup Packer	Stabbing Guide	Seal Cap		
7-3/4	196.85	15.11	166.63	163.45	9556900158	5303940440 (75B)	9556901178	9556902178		
8-5/8	219.08	6.71	205.66	202.48	9556900198	5303940400 (9D)	9556901198	9556902198		
8-5/8	219.08	7.72	203.64	200.46		9556901188	9556902188			
8-5/8	219.08	8.94	201.20	198.02						
8-5/8	219.08	10.16	198.76	195.58						
8-5/8	219.08	11.43	196.22	193.04	9556900178	5303940410 (8A)	9556901188	9556902188		
8-5/8	219.08	12.70	193.68	190.50		5303940420 (8B)				
8-5/8	219.08	14.15	190.78	187.60						
9-5/8	244.48	7.92	228.64	224.66		9556900215			5303940240 (9A)	9556901215
9-5/8	244.48	8.94	226.60	222.63	9556901198		9556902198			
9-5/8	244.48	10.03	224.42	220.45				5303940250 (9B)		
9-5/8	244.48	11.05	222.38	218.41						
9-5/8	244.48	11.99	220.50	216.54						
9-5/8	244.48	13.84	216.80	212.83	9556900198	5303940390 (9C)	9556901198	9556902198		
9-5/8	244.48	15.11	214.26	210.29		5303940400 (9D)				
9-5/8	244.48	15.47	213.54	209.58						
9-5/8	244.48	17.07	210.34	206.38						
9-5/8	244.48	18.64	207.20	203.23						
9-5/8	244.48	20.24	204.00	200.02						

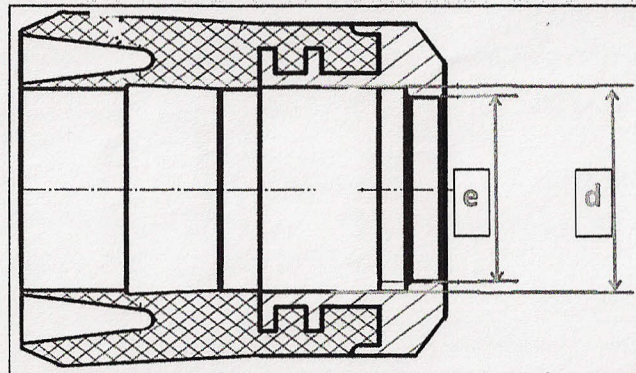
皮碗 Cup packer			
Casing	Type	d	e
9-5/8	A	$\phi 122(+0.3,0)$	/
	B	$\phi 122(+0.3,0)$	/
	C	$\phi 122(+0.3,0)$	/
	D	$\phi 122(+0.3,0)$	/
8-5/8	A	$\phi 122(+0.3,0)$	/
	B	$\phi 122(+0.3,0)$	/
7-5/8	A	$\phi 102(+0.3,0)$	$\phi 91(+0.25,0)$
	B		$\phi 91(+0.25,0)$
	C		$\phi 86(+0.15,0)$
7	A	$\phi 97.5(+0.3,0)$	$\phi 86(+0.15,0)$
	B		$\phi 86(+0.15,0)$
	C		$\phi 77(+0.5,+0.3)$
	D		$\phi 77(+0.5,+0.3)$

导向头 Stabbing guide		
No.	D	E
9556901215	$\phi 120(-0.120,-0.207)$	$\phi 110(-0.120,-0.207)$
9556901198	$\phi 120(-0.120,-0.207)$	$\phi 110(-0.120,-0.207)$
9556901188	$\phi 120(-0.120,-0.207)$	$\phi 110(-0.120,-0.207)$
9556901178	$\phi 101(-0.120,-0.207)$	$\phi 91(-0.120,-0.207)$
9556901158	$\phi 96(-0.120,-0.207)$	$\phi 86(-0.120,-0.207)$
9556901138	$\phi 79.6(-0.100,-0.174)$	$\phi 77(-0.100,-0.174)$

Structure of stabbing guide



7-5/8~7 packer



9-5/8~8-5/8 packer

